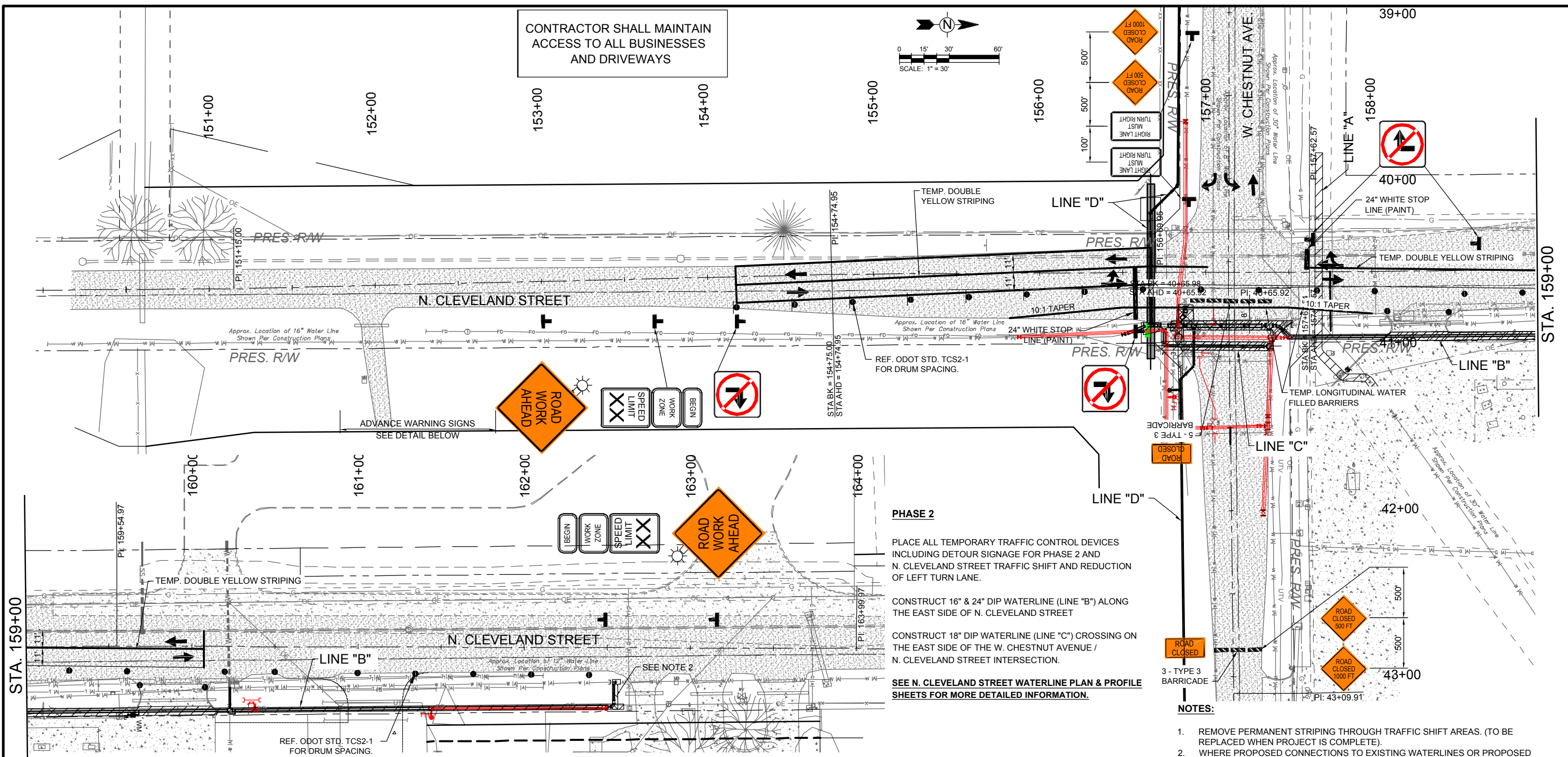
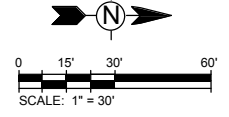


9/22/2017 2:04:18 PM - P:\277121\31-27712-13001\CAD\SHSHEETFILES\WATERLINE PLANS\CONSTR SEQ-PH2.DWG - SCHUMACHER, MIKE



CONTRACTOR SHALL MAINTAIN ACCESS TO ALL BUSINESSES AND DRIVEWAYS



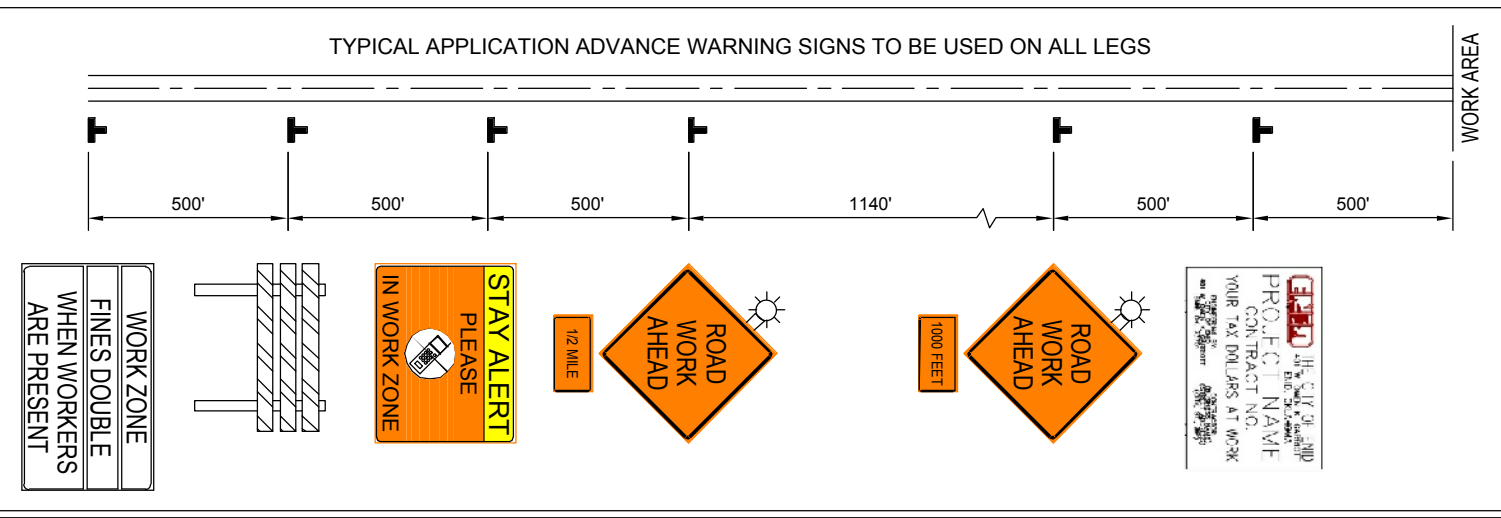
PHASE 2

- PLACE ALL TEMPORARY TRAFFIC CONTROL DEVICES INCLUDING DETOUR SIGNAGE FOR PHASE 2 AND N. CLEVELAND STREET TRAFFIC SHIFT AND REDUCTION OF LEFT TURN LANE.
- CONSTRUCT 16" & 24" DIP WATERLINE (LINE "B") ALONG THE EAST SIDE OF N. CLEVELAND STREET
- CONSTRUCT 18" DIP WATERLINE (LINE "C") CROSSING ON THE EAST SIDE OF THE W. CHESTNUT AVENUE / N. CLEVELAND STREET INTERSECTION.
- SEE N. CLEVELAND STREET WATERLINE PLAN & PROFILE SHEETS FOR MORE DETAILED INFORMATION.

NOTES:

1. REMOVE PERMANENT STRIPING THROUGH TRAFFIC SHIFT AREAS. (TO BE REPLACED WHEN PROJECT IS COMPLETE).
2. WHERE PROPOSED CONNECTIONS TO EXISTING WATERLINES OR PROPOSED HYDRANTS OCCUR IN CLOSE PROXIMITY TO TRAFFIC, UTILIZE THE 2009 MUTCD FIG. 6H-10 FOR "LANE CLOSURE ON A TWO-LANE ROAD USING FLAGGERS (TA-10)" DURING OFF-PEAK DAYLIGHT HOURS AS NEEDED.
3. MAINTAIN STREET ACCESS TO BOTH SOUTH AND WEST SIDES OF THE GAS STATION AT ALL TIMES.
4. TEMPORARY LONGITUDINAL WATER-FILLED BARRIERS. USE 10:1 FLARE RATES FOR BARRIER TRANSITIONS.
5. REMOVE TEMPORARY STRIPING AND REPLACE EXISTING PERMANENT STRIPING WHEN WORK IS COMPLETE.
6. REFERENCE ODOT TRAFFIC CONTROL STANDARDS TCS1-1, TCS2-1, TCS3-1, AND TCS4-1, TCS5-1, TCS6-1.
7. CONTRACTOR TO COORDINATE WITH CITY FOR ANY TRAFFIC SIGNAL CONTROL ADJUSTMENTS NEEDED DUE TO TEMPORARY TRAFFIC SHIFTS THROUGH INTERSECTION.
8. SEE ODOT TRAFFIC CONTROL STANDARD TCS21-1 FOR CONSTRUCTION ZONE PAVEMENT MARKING.

TYPICAL APPLICATION ADVANCE WARNING SIGNS TO BE USED ON ALL LEGS



LEGEND

	WORK COMPLETED PREVIOUS PHASE
	WORK AREA
	TYPE III BARRICADE w/ TYPE "A" WARNING LIGHTS R11-2 (LANE)
	DRUMS w/ W1-8(L)
	CHANNELIZING CONE
	SIGNAGE
	DIRECTION OF TRAVEL

DESIGN	MVS
DRAWN	AKR
CHECKED	MLD
APPROVED	MLD
SQUAD	

CITY OF ENID

TCP - SEQUENCE OF CONSTRUCTION PHASE 2

CITY PROJECT: W-1406B

SHEET NO. 12

GARFIELD COUNTY